

PENNSYLVANIA GAME COMMISSION

PROJECT NO. PGC-075-22-01

STATE GAME LANDS #075

NEW 40' x 100' CREW HEADQUARTERS BUILDING

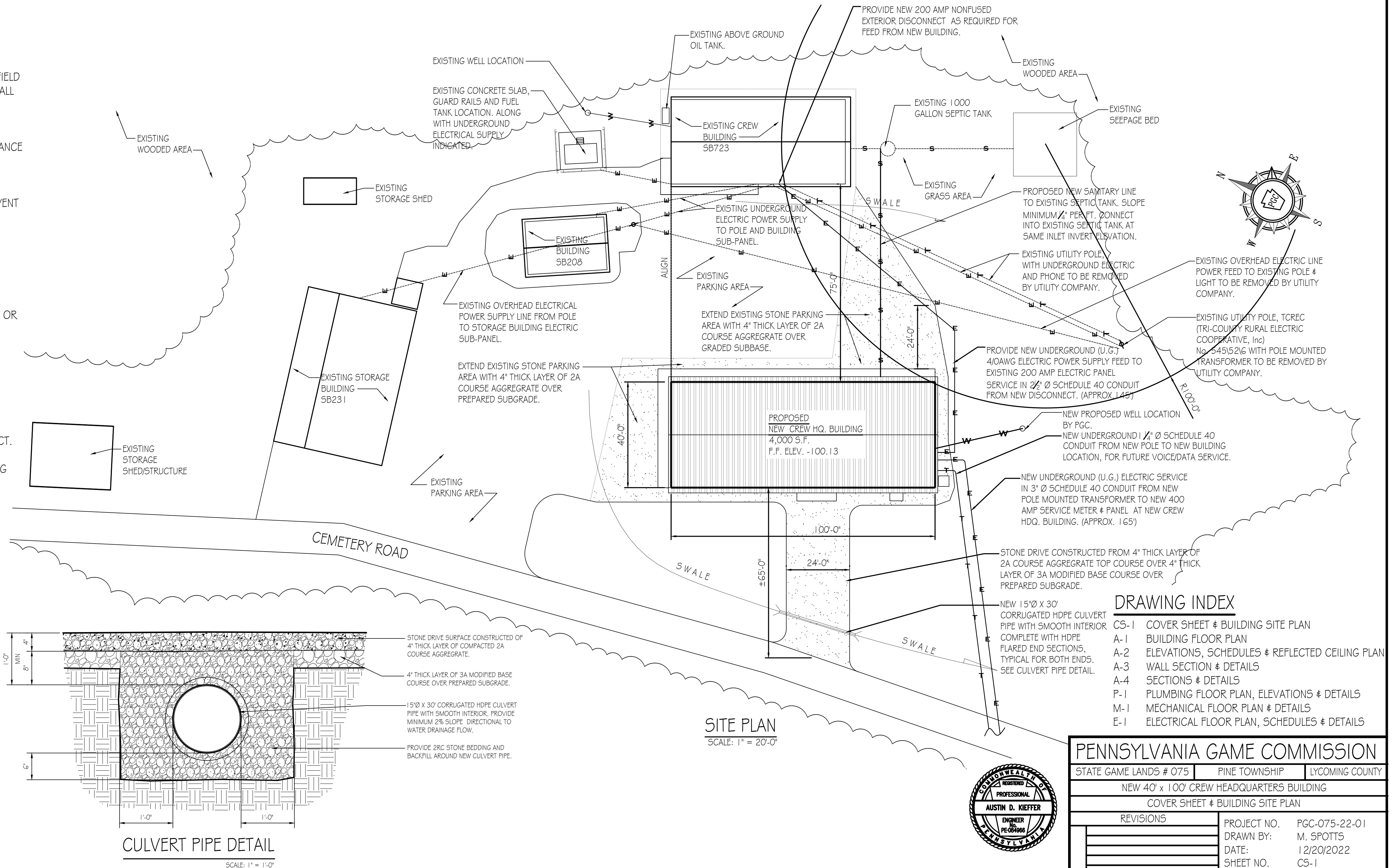
PINE TOWNSHIP, LYCOMING COUNTY, PENNSYLVANIA

CONTRACT NO. 1: GENERAL CONSTRUCTION
CONTRACT NO. 2: MECHANICAL CONSTRUCTION

CONTRACT NO. 3: PLUMBING CONSTRUCTION
CONTRACT NO. 4: ELECTRICAL CONSTRUCTION

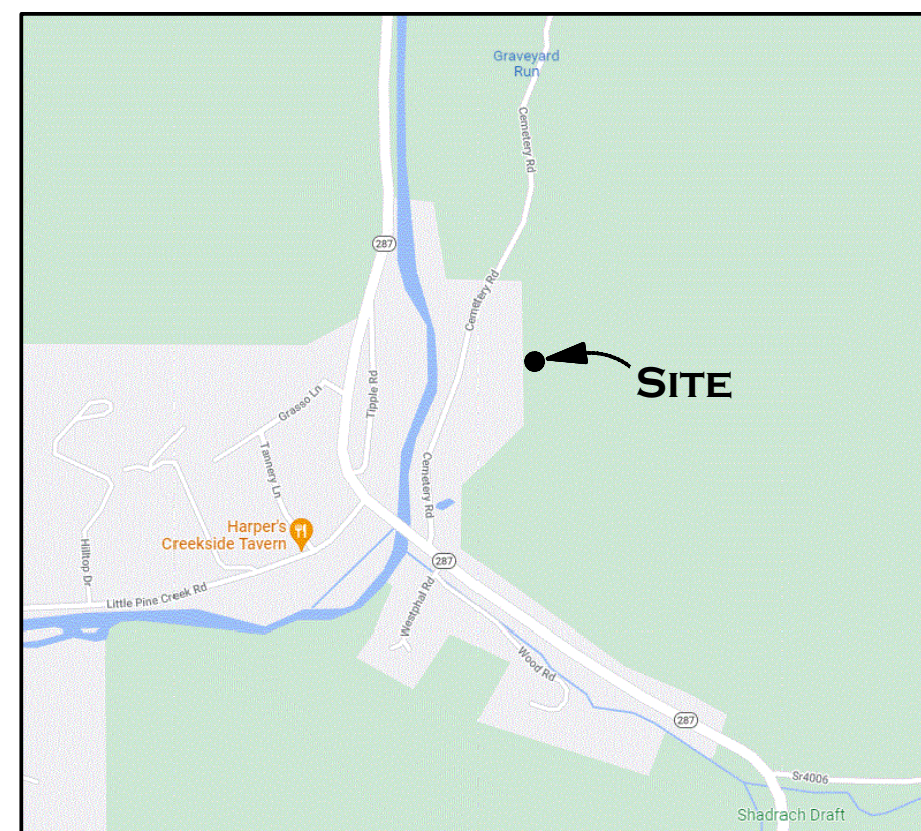
SITE PLAN GENERAL NOTES:

1. UTILITY LINE LOCATIONS SHOWN ON THE DRAWINGS ARE APPROXIMATE. UNDERGROUND TELEPHONE, ELECTRIC, GAS, SANITARY SEWER, WATER AND STORMWATER DRAINAGE LINES MAY BE PRESENT AT SOME WORK LOCATIONS. FIELD VERIFICATION IS REQUIRED PRIOR TO ANY CONSTRUCTION. CONTACT PA ONE CALL AND COMPLY WITH ACT 287 (AS AMENDED) REGARDING LOCATIONS OF UNDERGROUND UTILITIES.
2. ALL WORK WITHIN THE PUBLIC RIGHT-OF-WAY SHALL BE CONDUCTED IN ACCORDANCE WITH THE REQUIREMENTS OF PENNDOT, THE LOCAL MUNICIPALITY AND THE CONTRACT DOCUMENTS.
3. CONTRACTOR SHALL COORDINATE WITH AFFECTED UTILITY COMPANIES IN THE EVENT ITEMS SUCH AS TEMPORARY POLE SUPPORT IS REQUIRED. THIS WORK SHALL BE COMPLETED AT NO ADDITIONAL COST TO THE OWNER.
4. EXISTING DRAINAGE FACILITIES SHALL REMAIN INTACT DURING CONSTRUCTION, UNLESS OTHERWISE DIRECTED BY THE ENGINEER.
5. ALL AREAS DISTURBED BY THE CONSTRUCTION WORK SHALL BE RESTORED IN ACCORDANCE WITH THE CONTRACT DOCUMENTS TO THEIR ORIGINAL CONDITION OR BETTER.
6. ALL DISTURBED AREAS NOT RECEIVING OTHER SURFACE TREATMENT SHALL BE GRADED, SEEDED, AND MULCHED.
7. CONTRACTOR SHALL REFER TO CONTRACT DOCUMENTS FOR SOIL EROSION & SEDIMENTATION CONTROL PLAN REQUIREMENTS.
8. MAINTAIN ACCESS TO DRIVEWAYS AND ENTRANCES LOCATED ALONG THE PROJECT.
9. THE CONTRACTOR SHALL ENSURE THAT ALL CONSTRUCTION VEHICLES (INCLUDING MATERIAL SUPPLIER VEHICLES) LEAVING THE PROJECT AREA HAVE MUD BUILDUP REMOVED FROM THE TIRES BEFORE EXITING ONTO PAVED ROADWAYS. ALL MUD TRACKED ONTO PAVED ROADWAYS SHALL BE IMMEDIATELY REMOVED FROM THE ROADWAY.

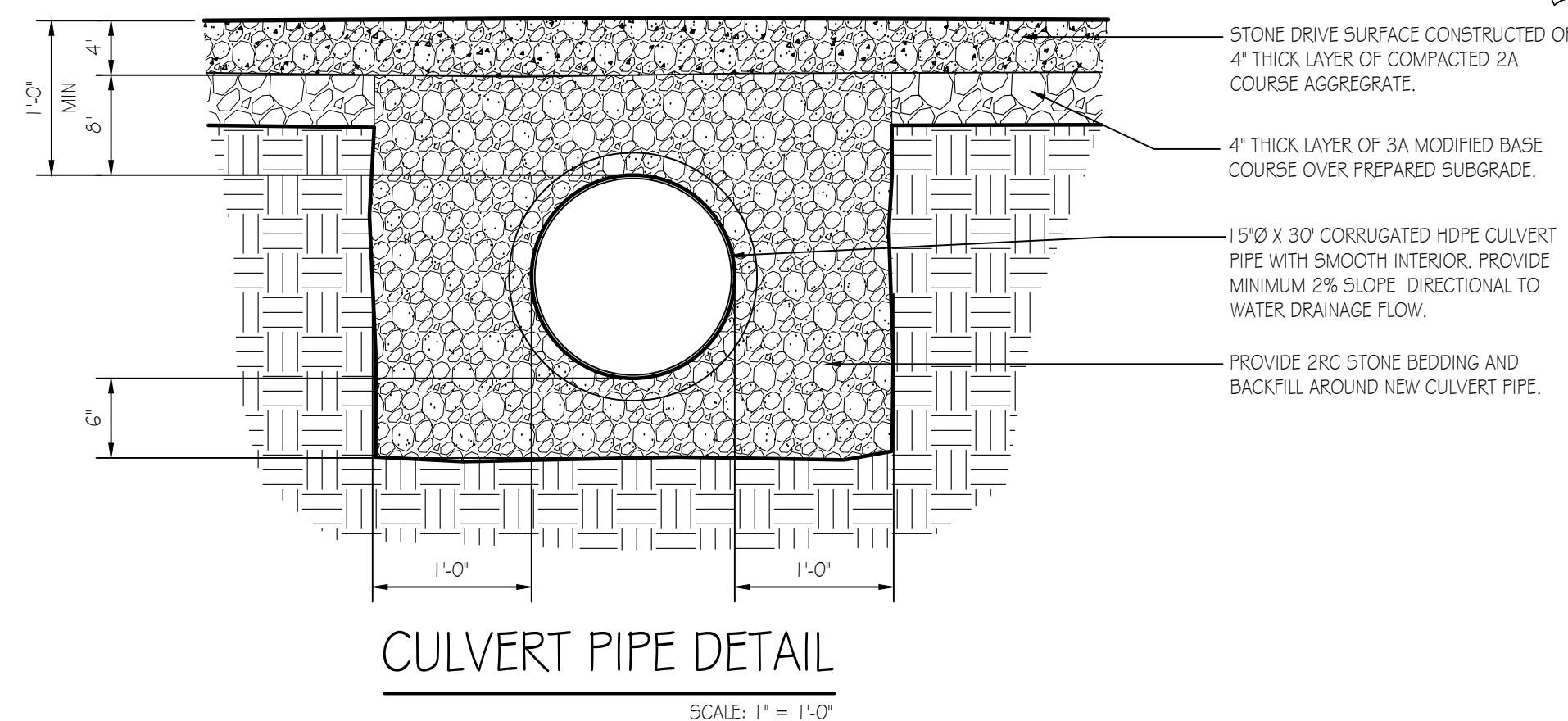


DRAWING INDEX

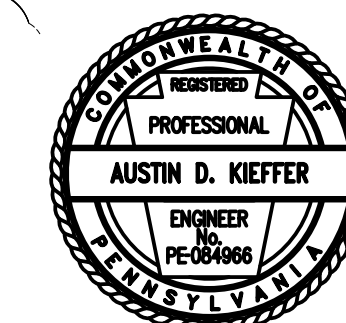
CS-1	COVER SHEET & BUILDING SITE PLAN
A-1	BUILDING FLOOR PLAN
A-2	ELEVATIONS, SCHEDULES & REFLECTED CEILING PLAN
A-3	WALL SECTION & DETAILS
A-4	SECTIONS & DETAILS
P-1	PLUMBING FLOOR PLAN, ELEVATIONS & DETAILS
M-1	MECHANICAL FLOOR PLAN & DETAILS
E-1	ELECTRICAL FLOOR PLAN, SCHEDULES & DETAILS



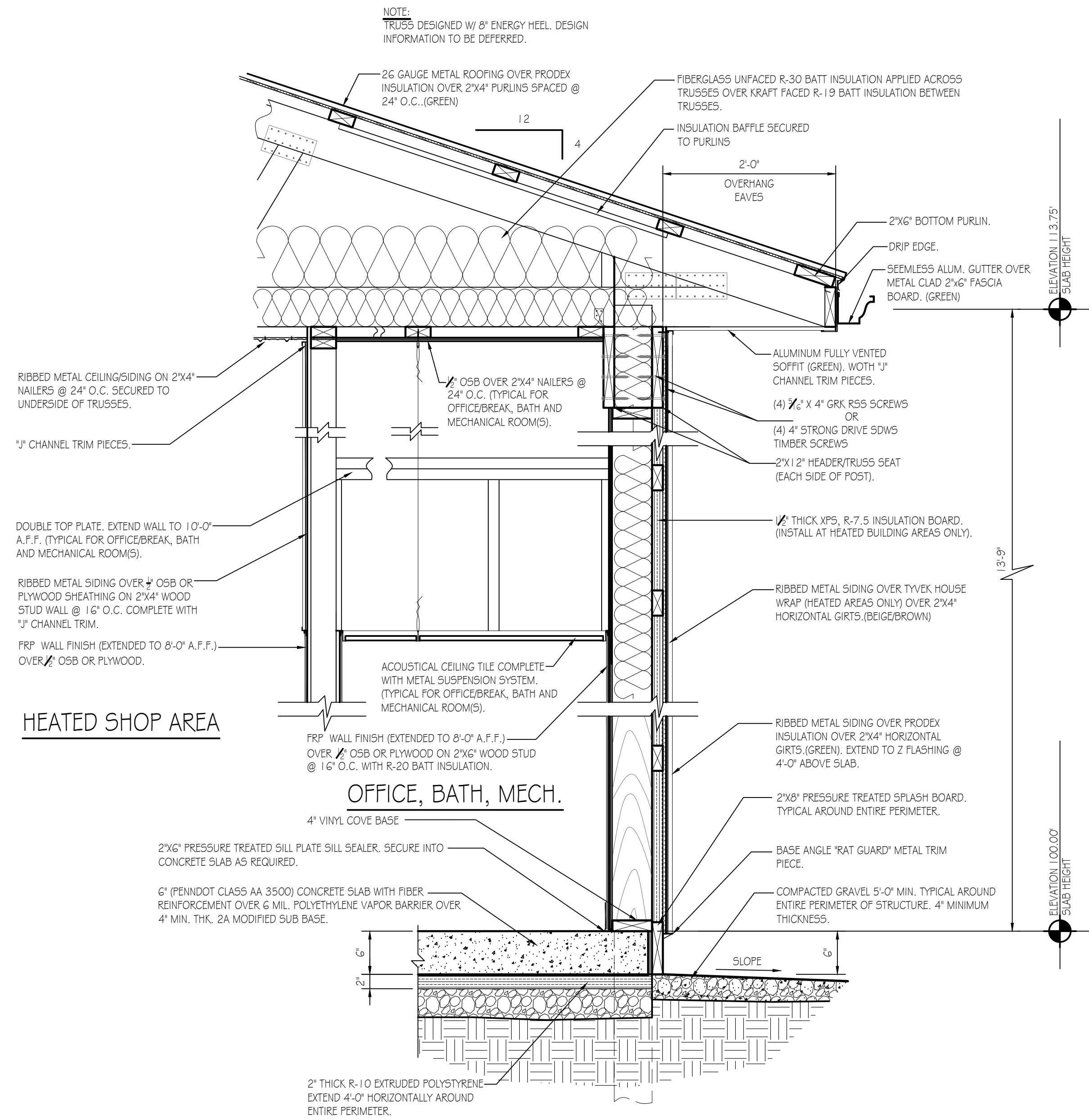
PROJECT VICINITY MAP
NOT TO SCALE



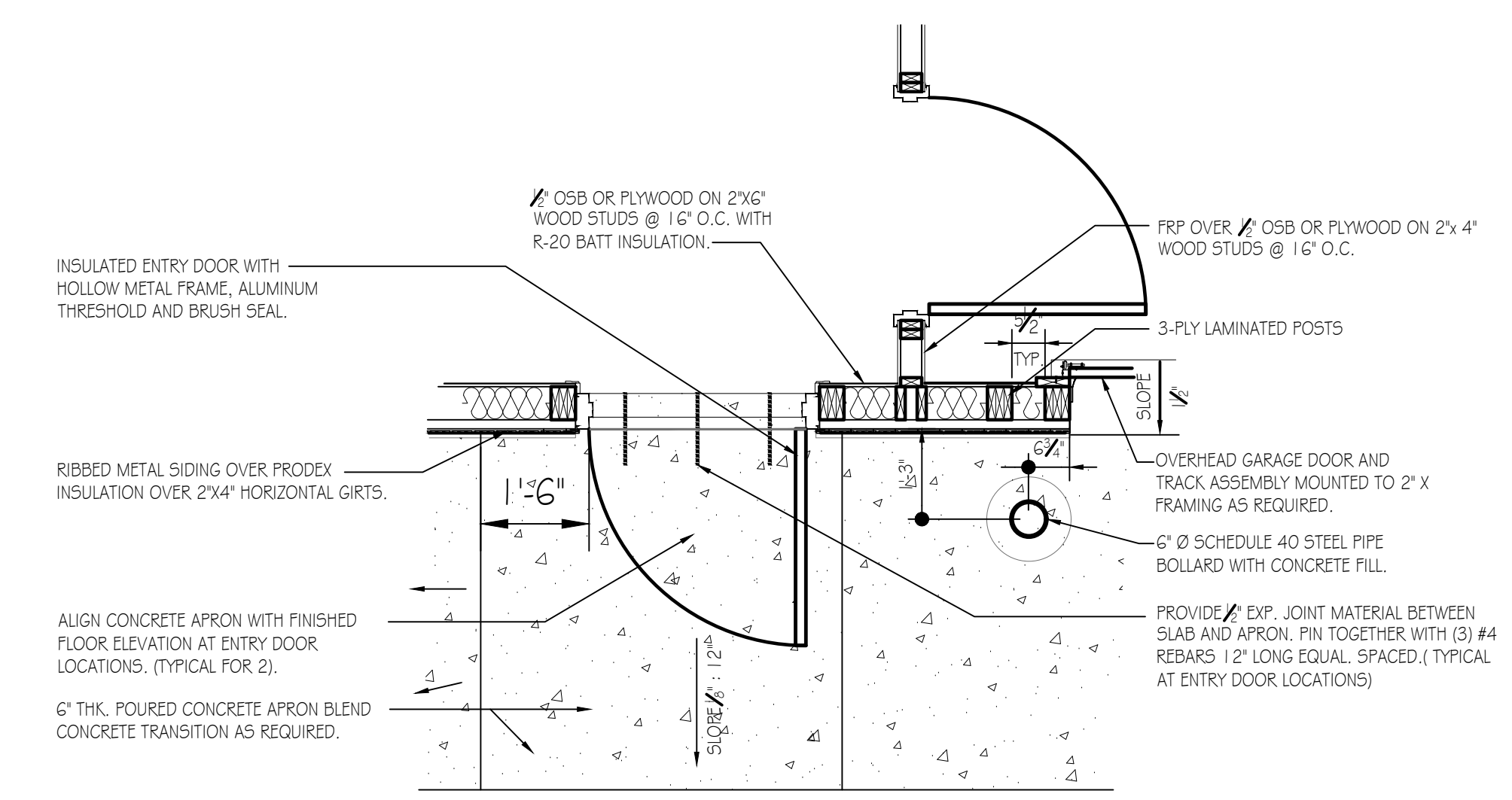
SITE PLAN
SCALE: 1" = 20'-0"



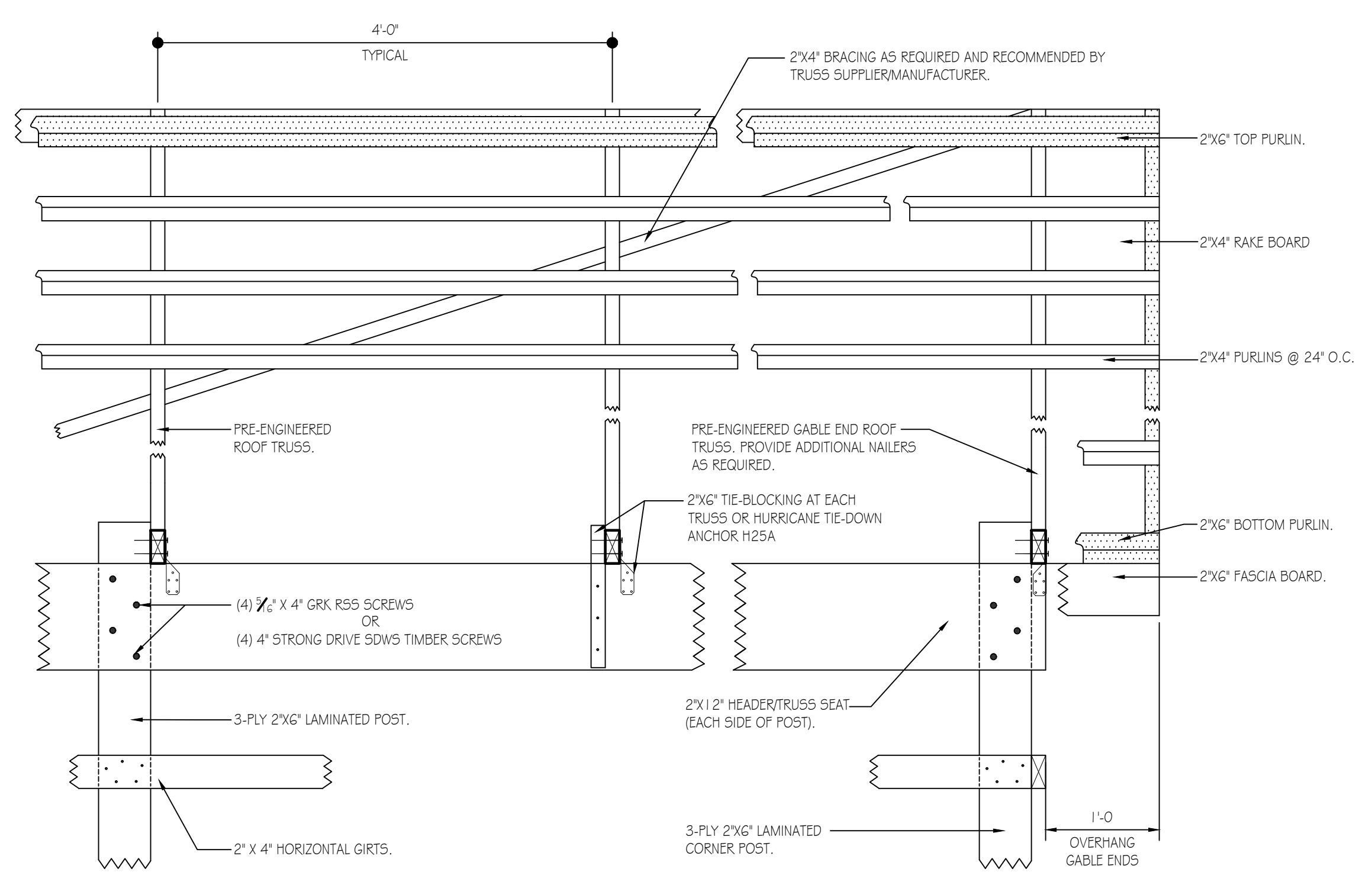
PENNSYLVANIA GAME COMMISSION		
STATE GAME LANDS # 075	PINE TOWNSHIP	LYCOMING COUNTY
NEW 40' x 100' CREW HEADQUARTERS BUILDING		
COVER SHEET & BUILDING SITE PLAN		
REVISIONS	PROJECT NO.	PGC-075-22-01
	DRAWN BY:	M. SPOTTIS
	DATE:	12/20/2022
	SHEET NO.	CS-1



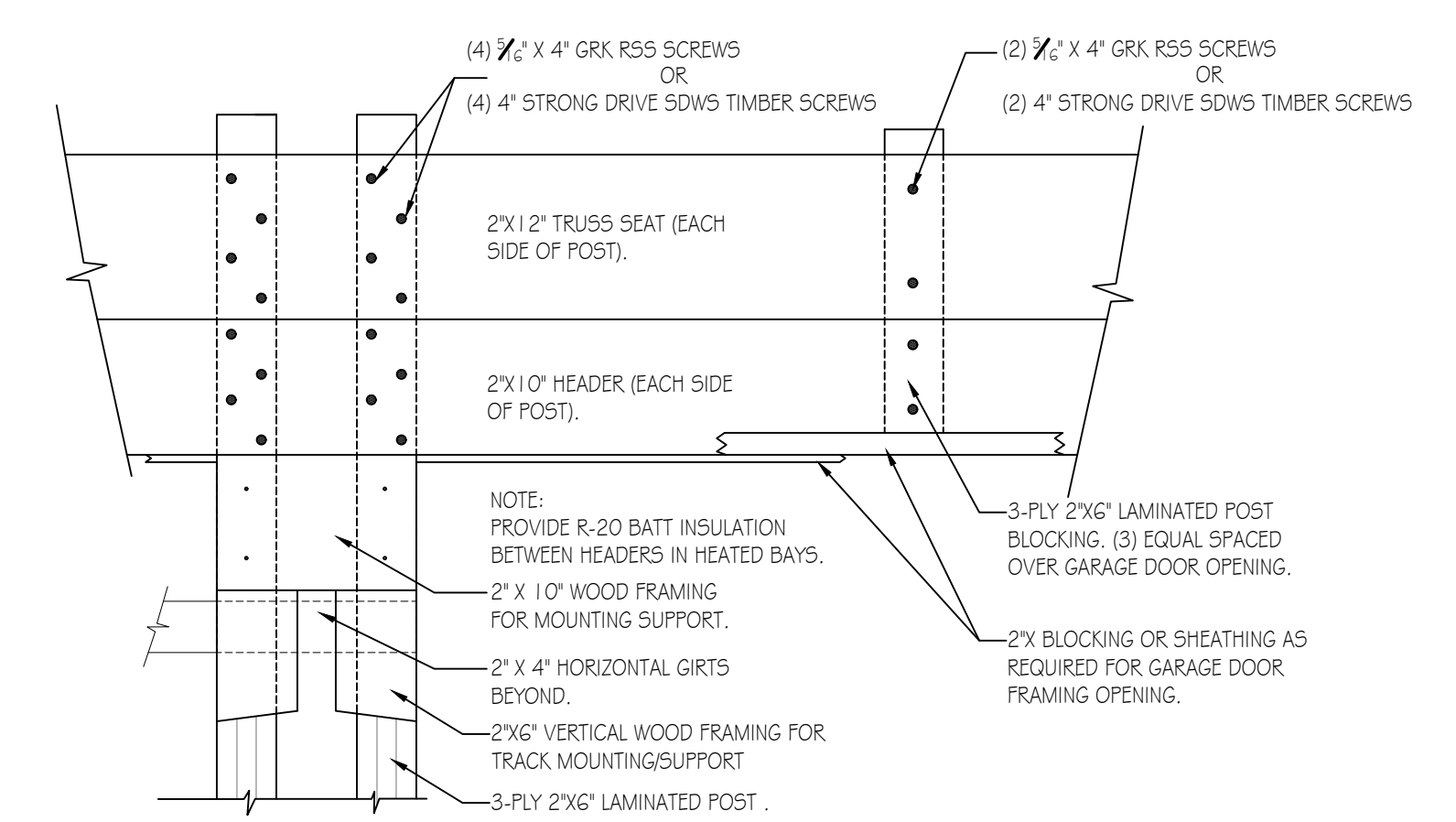
WALL SECTION DETAIL
SCALE: 1" = 1'-0"
A-3



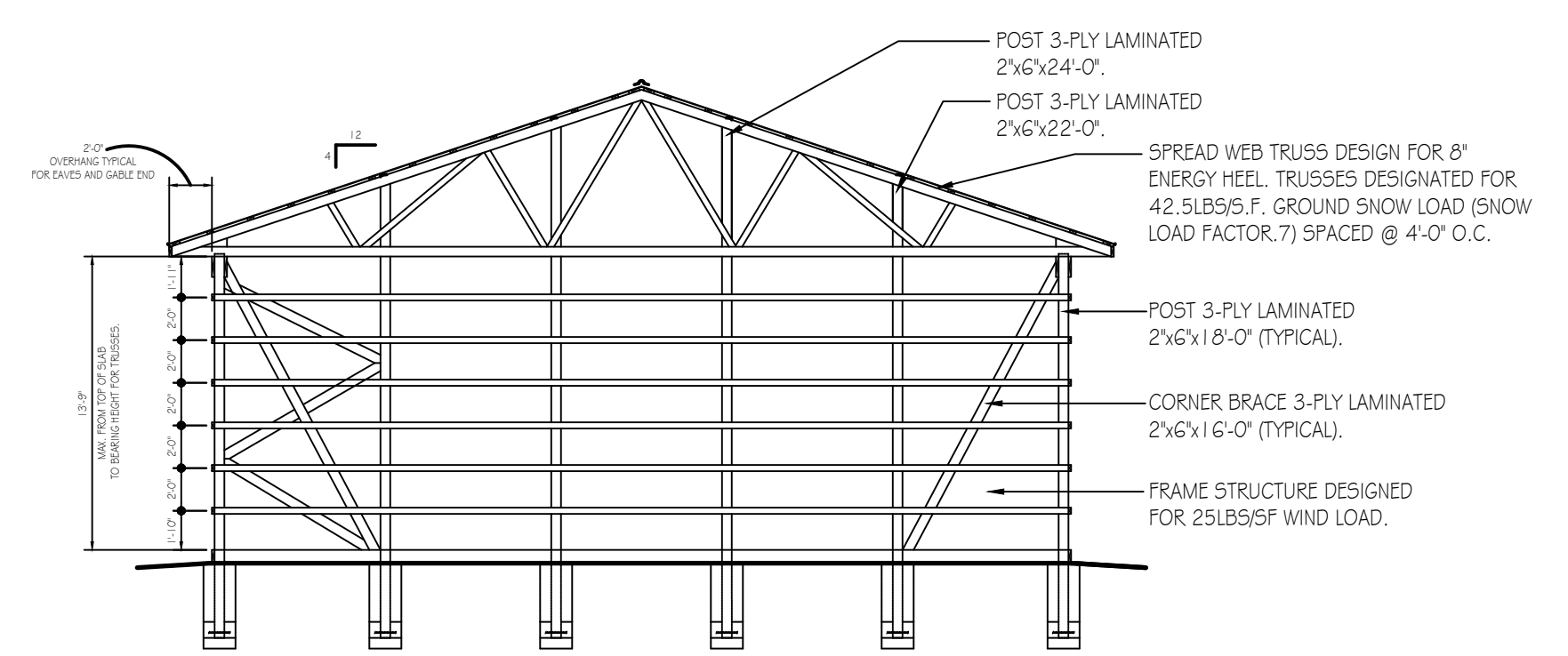
DETAIL AT ENTRY DOOR
SCALE: 1/2" = 1'-0"



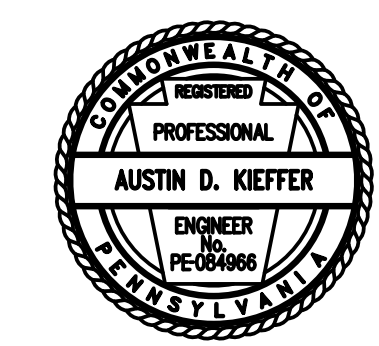
TYPICAL ROOF FRAMING/BRACING DETAIL
SCALE: 1" = 1'-0"



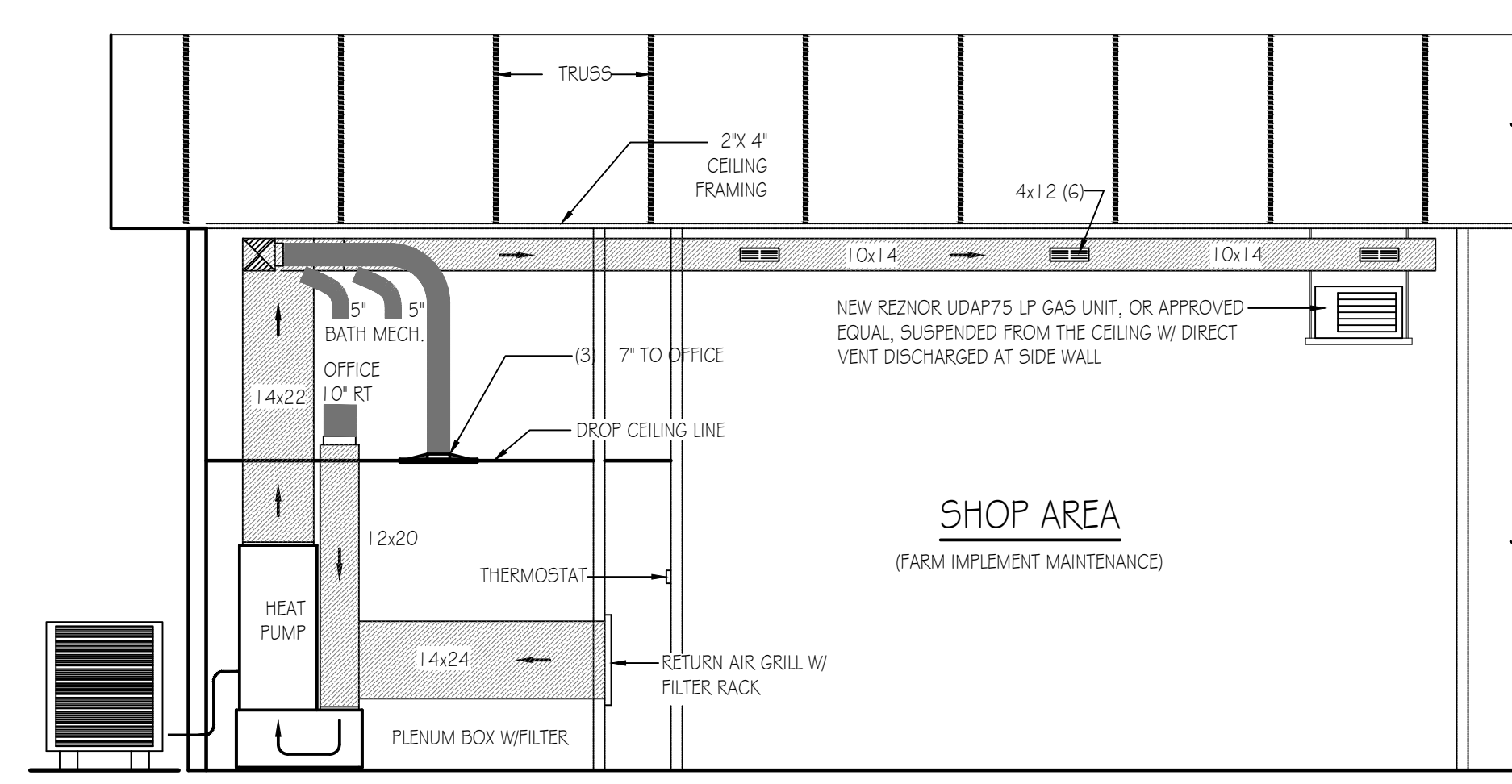
GARAGE DOOR FRAMING DETAIL
SCALE: 1" = 1'-0"



TYPICAL SECTION
SCALE: 1/8" = 1'-0"



PENNSYLVANIA GAME COMMISSION		
STATE GAME LANDS # 075	PINE TOWNSHIP	LYCOMING COUNTY
NEW 40' x 100' CREW HEADQUARTERS BUILDING		
SECTIONS & DETAILS		
REVISIONS	PROJECT NO.	PGC-075-22-01
	DRAWN BY:	M. SPOTTS
	DATE:	12/20/2022
	SHEET NO.	A-4



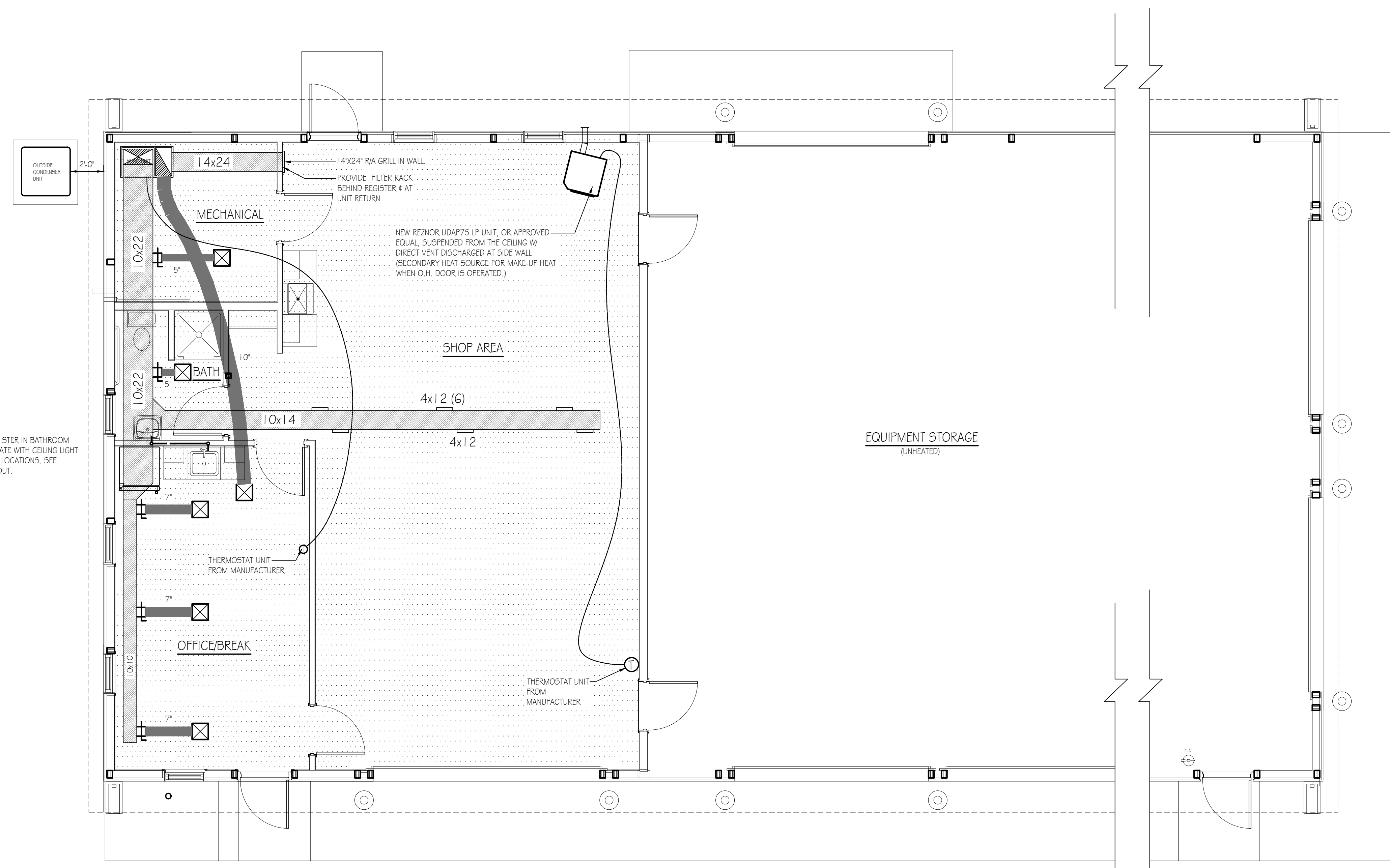
BUILDING SECTION - MECHANICAL

SCALE: 1/4" = 1'-0"

MECHANICAL CONSTRUCTION NOTES:

HVAC SYSTEM TO BE A BOSCH HEAT PUMP SYSTEM. LAYOUT OF DUCTS, DUCT SIZES AND DIFFUSERS ARE MEANT TO BE USED AS A GUIDELINE. ACTUAL RUNS, SIZES AND LOCATIONS TO BE DETERMINED BY MANUFACTURERS MODEL. THE FOLLOWING STEPS SHOULD BE FOLLOWED IN THE DESIGN AND INSTALLATION OF THE HVAC SYSTEM TO ENSURE EFFICIENCY AND COMFORT.

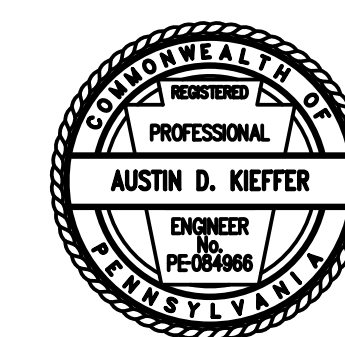
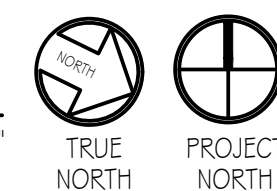
1. DETERMINE ROOM-BY-ROOM AND AIR-FLOWS USING ACCA MANUAL J CALCULATION PROCEDURES. (OR SUBSTANTIALLY EQUIVALENT)
 2. SIZE DUCT SYSTEM ACCORDING TO ACCA MANUAL D CALCULATION PROCEDURES. (OR SUBSTANTIALLY EQUIVALENT)
 3. SIZE HVAC EQUIPMENT TO SENSIBLE LOAD USING ACCA MANUAL S CALCULATION PROCEDURES (OR SUBSTANTIALLY EQUIVALENT).
 4. INSTALL EQUIPMENT & DUCTS ACCORDING TO DESIGN SPECIFICATIONS USING INSTALLATION PROCEDURES FROM SMACNA / MANUFACTURERS' SPECS.
 5. INSTALL 50 STATIC AIR PRESSURE DROP ACROSS THE AIR HANDLER IS WITHIN MANUFACTURER AND DESIGN SPECIFICATIONS.
 6. PROVIDE BALANCED AIR FLOWS BETWEEN SUPPLY AND RETURN SYSTEMS TO MAINTAIN NEUTRAL PRESSURE.
 7. EQUIPMENT AND ASSOCIATED ITEMS MUST BE APPROVED BY PGC HARRISBURG ENGINEERING DIVISION BEFORE START OF INSTALLATION.
- HEAT PUMP TO BE A 5 TON BOSCH BOVA - 060-HD11 - M12M OUTSIDE CONDENSER UNIT W/ BQH96M100CSB AIR HANDLER/FURNACE AND BMAC4860CNTF CASE COIL. UNITS TO ACHIEVE A MINIMUM 17 SEER AND 9.5 HSPF (OR SUBSTANTIALLY EQUIVALENT). SEE SPECIFICATIONS.



NOTE:
LOCATE AIR SUPPLY REGISTER IN BATHROOM BELOW DUCT, COORDINATE WITH CEILING LIGHT FIXTURE & EXHAUST FAN LOCATIONS. SEE REFLECTED CEILING LAYOUT.

NEW CREW BUILDING - PLUMBING PLAN

SCALE: 1/4" = 1'-0"



PENNSYLVANIA GAME COMMISSION		
STATE GAME LANDS # 075	PINE TOWNSHIP	LYCOMING COUNTY
NEW 40' x 100' CREW HEADQUARTERS BUILDING		
MECHANICAL FLOOR PLAN AND DETAILS		
REVISIONS	PROJECT NO.	PGC-075-22-01
	DRAWN BY:	M. SPOTTS
	DATE:	12/20/2022
	SHEET NO.	M-1

LOAD CENTER: 200A SERVICE PANEL SCHEDULE
VOLTAGE: 240/120V
SERVICE FEEDER SIZE: 2-#4/0 & 1-#2 AL

Circuit No.	Poles	Breakers	Amps	200 AMP Main Service Breaker	Wiring	Conduit
1,3	2	50		220 VOLT OUTLET (WELDER)	3-#6	1-1/4"
2,4				SPARE		
5,7	2	50		220 VOLT OUTLET (WELDER)	3-#6	1-1/4"
6,8	2	30		220 VOLT OUTLET (AIR COMPRESSOR)	3-#10	3/4"
9,11	2	30		MECHANICAL ROOM DRYER RECEPTACLE	3-#10	3/4"
10,12	2	20		WELL PUMP	3-#10	3/4"
13,15	2	40		HVAC OUTSIDE UNIT	3-#8	1"
14,16	2	60		HVAC INSIDE AIR HANDLER UNIT	Verify w/ M.C.	Verify
17	1	20		WATER CONDITIONING EQUIPMENT	3-#12	3/4"
18	1	20		WATER HEATER	3-#12	3/4"
19	1	20		GAS HEATER	3-#12	3/4"
20	1	20		SERVICE PANEL RECEPTACLE	3-#12	3/4"
21	1	20		SHOP RECEPTACLES W/ GFC PROTECTION	3-#12	3/4"
22	1	20		SHOP RECEPTACLES W/ GFC PROTECTION	3-#12	3/4"
23	1	20		WORK SHOP GENERAL LIGHTING	3-#12	3/4"
24				SPARE		
25	1	20		UTILITY GFI RECEPTACLES	3-#12	3/4"
26	1	20		OFFICE, RESTROOM, & MECH. LIGHTING	3-#12	3/4"
27	1	20		EQUIPMENT STORAGE LIGHTING	3-#12	3/4"
28	1	20		EQUIPMENT STORAGE RECEPTACLES W/ GFC PROTECTION	3-#12	3/4"
29	1	20		EQUIPMENT STORAGE RECEPTACLES W/ GFC PROTECTION	3-#12	3/4"
30	1	20		EQUIPMENT STORAGE RECEPTACLES W/ GFC PROTECTION	3-#12	3/4"
31	1	20		REFRIGERATOR	3-#12	3/4"
32	1	20		OFFICE RECEPTACLES	3-#12	3/4"
33	1	20		BREAK, RESTROOM GFI RECEPTACLES	3-#12	3/4"
34	1	20		MICROWAVE	3-#12	3/4"
35	1	20		CLOTHES WASHER RECEPTACLE	3-#12	3/4"
36	1	20		GARAGE DOOR OPENER RECEPTACLES	3-#12	3/4"
37-42				SPARE SPACES		

PANEL SCHEDULE NOTES:
• Match receptacle to welder

LIGHTING FIXTURE SCHEDULE

MARK	QTY	FIXTURE TYPE	MODEL
A	3	2' X 4' LED PANEL	SIMKAR LDP2450L40U1
B	11	15.25' X 22' 4 LAMP LED HIGH BAY	LITHONIA IRI 15000LM 500B0 MD QZ I/O 40K 80 CR
C	1	2' INTEGRATED LED WALL MOUNT VANITY LIGHT (1 & WATT)	LITHONIA FMTVSL 300CK
D	3	SECURITY MOTION, WALL MOUNT/OUTSIDE UNIT	HEATH ZENITH SL-SG30-BZ
E	3	EXIT & EMERGENCY COMBO LIGHT W/BATTERIES & REMOTE HEAD	LITHONIA ECRLEDH0 M6 WEA LED WF M12
F	1	2' X 2' LED PANEL	SIMKAR LDP240L40U1
G	1	110 CFM, CEILING MOUNT EXHAUST FAN	BROAD AER 110K

ELECTRICAL WIRING SYMBOLS

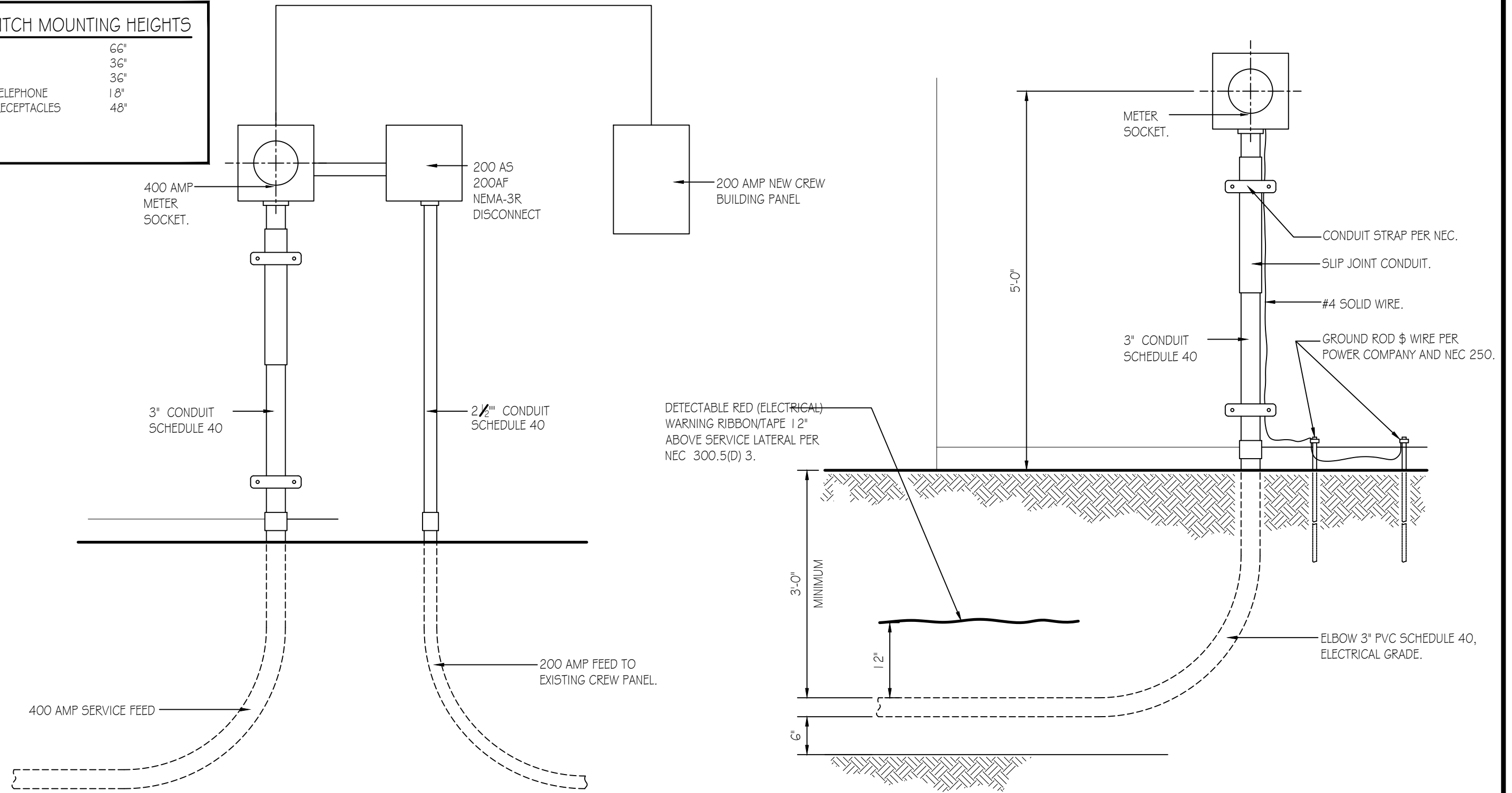
	GFI WATER RESISTANT RECEPTACLE
	GFI RECEPTACLE
	DUPLEX OUTLET, SPURT CIRCUIT
	DUPLEX OUTLET
	50 AMP, 220 VOLT OUTLET, WELDER (VERIFY TYPE & LOCATION WITH FGC)
	30 AMP, 220 VOLT OUTLET
	30 AMP, 220 VOLT OUTLET (DRYER)
	HOME RUN CIRCUIT #
	TELECOMMUNICATIONS OUTLET
	JUNCTION BOX
	PHOTO CELL
	EXIT LIGHTING W/BATTERIES
	SWITCH
	SWITCH, 3 WAY
	SWITCH, 4 WAY
	OCCUPANCY SENSOR
	PRESSURE SWITCH
	WATER PUMP

GENERAL ELECTRICAL NOTES:

- FURNISH AND INSTALL SOLID COPPER CONDUCTORS AS SPECIFIED; NO ALUMINUM AND NO STRANDED. MC CABLE IS APPROVED FOR ALL HOME RUN CIRCUITS IF NEATLY INSTALLED.
- ALL CONDUCTORS FOR 120V CIRCUITS OVER 100' IN LENGTH SHALL BE MINIMUM #10AWG. ALL CONDUCTORS FOR 120V CIRCUITS OVER 150' IN LENGTH SHALL BE MINIMUM #8AWG. CONTRACTOR IS RESPONSIBLE FOR VERIFICATION OF FINAL CIRCUIT LENGTHS AND CORRESPONDING WIRE SIZE TO ENSURE VOLTAGE DROP IS MAINTAINED WITHIN NEC LIMITS.
- ALL WORK SHALL BE PERFORMED AS REQUIRED BY APPLICABLE SECTION OF THE NATIONAL ELECTRICAL CODE (NEC), LATEST EDITION, AND ALL GOVERNING UCC BUILDING CODES AND REGULATIONS.
- PROVIDE GROUNDING AND BONDING FOR ELECTRICAL SYSTEMS. ELECTRICAL COMPONENTS, DEVICES AND ACCESSORIES SHALL BE LISTED AND LABELED AS DEFINED IN NFPA 70 AND COMPLY WITH UL 467 FOR GROUNDING AND BONDING MATERIALS AND EQUIPMENT. INSTALL INSULATED EQUIPMENT GROUNDING CONDUCTORS ALL FEEDERS AND BRANCH CIRCUITS. LIGHTING CIRCUITS, RECEPTACLE CIRCUITS SINGLE PHASE MOTOR AND APPLIANCE BRANCH CIRCUITS, ARMORED AND METAL-CLAD CABLE RUNS AND AS REQUIRED BY NFPA 70.
- PROVIDE ALL HANGERS AND SUPPORTS FOR ELECTRICAL SYSTEMS, INCLUDING STEEL SLOTTED SUPPORT SYSTEMS, CONDUIT AND CABLE SUPPORT DEVICES, SUPPORTS FOR CONDUCTORS IN VERTICAL CONDUIT. HANGERS AND SUPPORTS SHALL HAVE A FLAME RATING OF CLASS 1 AND BE SELF-EXTINGUISHING ACCORDING TO ASTM D 635.
- PROVIDE CAT5 WIRE LABELED AND RAN FROM EACH DATA BOX TO MECHANICAL ROOM. PROVIDE 10' ADDITIONAL COILED LENGTH IN MECHANICAL ROOM FOR EACH RUN.
- MOUNT COMBINATION EXIT/EMERGENCY LIGHTING UNITS TO THE LIGHTING BRANCH CIRCUIT IN THE ROOM IT IS SERVING ON THE LINE SIDE OF ANY SWITCHES.
- EXISTING 200 AMP MAIN PANEL IN EXISTING CREW HEADQUARTERS BUILDING. MODIFY EXISTING MAIN PANEL AS REQUIRED BY CODE TO RECEIVE NEW SERVICE FEED.

RECEPTACLE & SWITCH MOUNTING HEIGHTS

MICROWAVE	36"
WASHER	36"
DRYER	36"
OFFICE RECEPTACLES AND TELEPHONE	18"
ALL SWITCHES AND OTHER RECEPTACLES	48"



POWER RISER DIAGRAM
NO SCALE

UNDERGROUND SERVICE DETAIL
NO SCALE

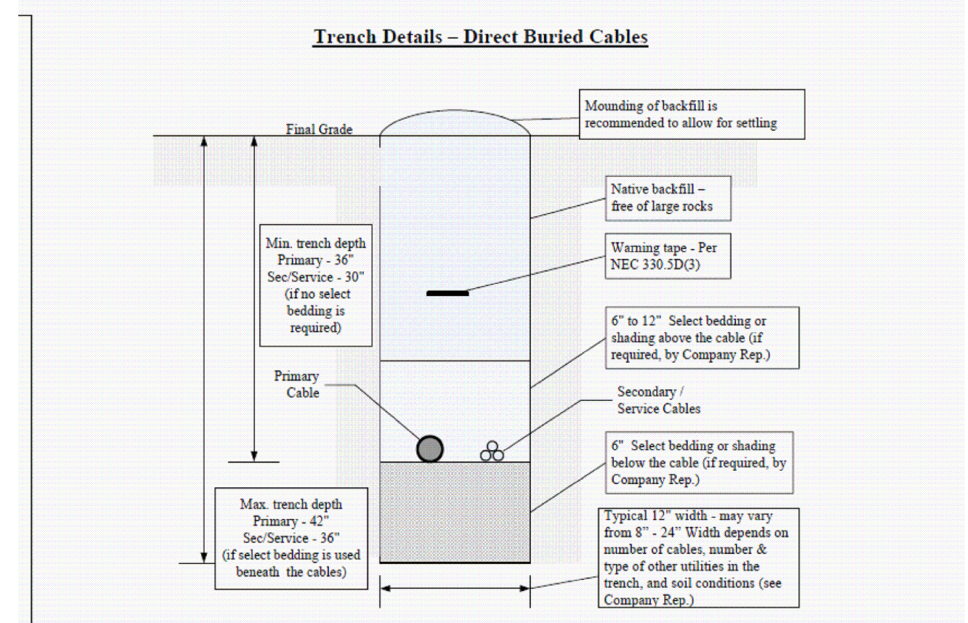
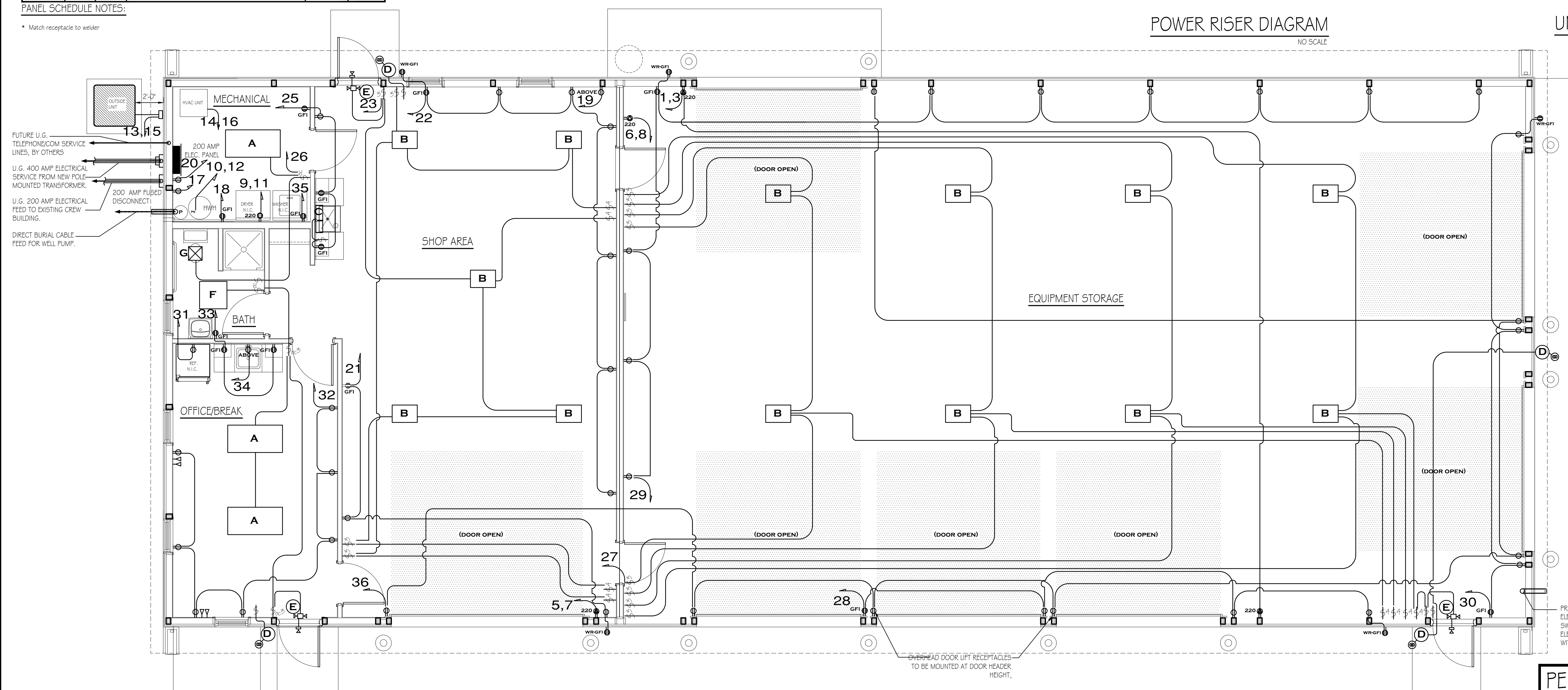


TABLE - MINIMUM COVER REQUIRED PER CODE (INCHES)

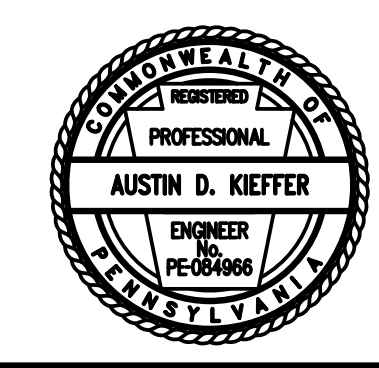
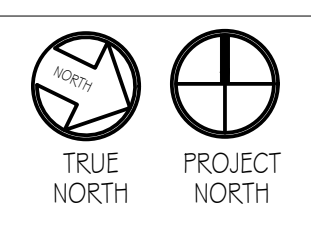
Voltage / Code	Customer Installed Facilities - NEC (1)				Company / 2013
	Direct Buried	Rigid Metallic Conduit (RMC)	Rigid Nonmetallic Conduit (RNC)	Street / Road Parking Lot (2)	
0 - 480 V	18	6	18	24	24
> 480 V - 22 kV	30	6	18	24	30
> 22 kV - 48 kV	34	6	24	24	30

Notes: (1) FIDEC typically requires an additional 6 inches of cover to allow for variations in final grade.
(2) For cables located towards roads under Penn DOT jurisdiction, cables must be installed to conduit and have a maximum of 36 inches of cover.

TRENCH DETAILS FOR DIRECT BURIED CABLES

PROVIDE SCHEDULE 40 2\"/>

NEW CREW BUILDING - ELECTRICAL PLAN
SCALE: 1/4" = 1'-0"



PENNSYLVANIA GAME COMMISSION

STATE GAME LANDS # 075 PINE TOWNSHIP LYCOMING COUNTY

NEW 40' x 100' CREW HEADQUARTERS BUILDING

ELECTRICAL FLOOR PLAN, SCHEDULES & DETAILS

REVISIONS	PROJECT NO.	PGC-075-22-01
	DRAWN BY:	M. SPOTTS
	DATE:	12/20/2022
	SHEET NO.	E-1